



4-H Family News

February 2025

Jackson County Connections



Kyle Mason Memorial
Scholarship
Due March 15th

For application and details go to

<https://www.canr.msu.edu/jackson/4-h/newsletters-scholarships-and-awards>

Jackson MSU Alumni (Jackson Spartans)
Due July 1st

For applications and details go to

<https://www.jacksonspartans.com/s/1393/18/interior.aspx?sid=1393&gid=82&pgid=11338>

CONTACT US

Hayley Wineland
winela11@msu.edu
4-H Program Coordinator

Jessica Waldron
waldro45@msu.edu
4-H Program Assistant

Gerilyn Darnell
darnel37@msu.edu
Support Staff

PHONE & EMAIL:

(517) 788-4292

msue.Jackson@county.msu.edu

WEBSITE:

<https://www.canr.msu.edu/jackson/4-h/>



Stay Connected

* Jackson County 4-H Facebook Page:

<https://www.facebook.com/jacksoncounty4h>

* Jackson Co. 4-H Small Animal Assoc. Facebook Page:

<https://www.facebook.com/JacksonCountySmallAnimal>

* Jackson County 4-H Livestock Assoc. Facebook Page:

<https://www.facebook.com/JacksonCountyLargeAnimal>

* Jackson County Horse Council Facebook Group:

<https://www.facebook.com/groups/232601997473213>

MSU is an affirmative-action, equal-opportunity employer, committed to achieving excellence through a diverse workforce and inclusive culture that encourages all people to reach their full potential. Michigan State University Extension programs and materials are open to all without regard to race, color, national origin, gender, gender identity, religion, age, height, weight, disability, political beliefs, sexual orientation, marital status, family status or veteran status. Issued in furtherance of MSU Extension work, acts of May 8 and June 30, 1914, in cooperation with the U.S. Department of Agriculture. Quentin Tyler, Director, MSU Extension, East Lansing, MI 48824. This information is for educational purposes only. Reference to commercial products or trade names does not imply endorsement by MSU Extension or bias against those not mentioned.



COUNTY CALENDAR OF EVENTS



February Meetings

Tuesday 4th Cloverbud
*See flyer for details

Monday 10th 7:00pm
Horse Council Meeting

Thursday 13th Pocket Pets
*See flyer for details

Monday 17th MSUE Office Closed

Friday 21st Chocolate Party
*See flyer for details

March Meetings

Tuesday 4th Cloverbud
*See flyer for details

Monday 10th 7:00pm
Horse Council Meeting

Tuesday 11th 7:00pm
Small Animal Association Meeting

Thursday 4th Pocket Pets
*See flyer for details

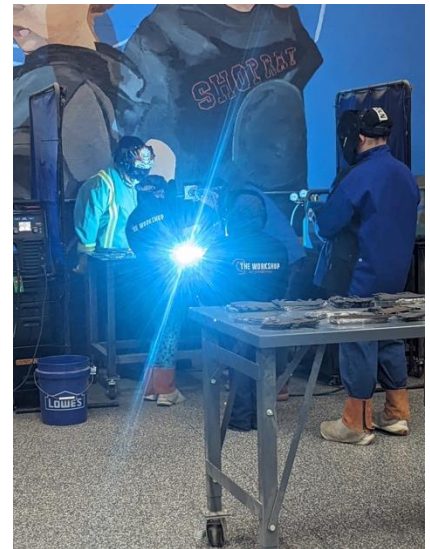
Monday 17th 6:00pm
Youth Council at 6pm

Wednesday 19th:
Large Animal Expectations Meeting at 6:30pm
Large Animal Meeting afterwards

MSU Extension
Office

1715 Lansing
Ave Ste #257

Jackson, MI
49202



YOUTH FOR THE QUALITY CARE OF ANIMALS

Food Safety - Animal Well Being - Character

Jackson County 4-H'er's who are taking MARKET BEEF, SHEEP & OR SWINE to fair will need to be YQCA certified. You can either take the class in-person class or do it online at your convenience.

In-Person

April 2nd at 6pm

Jackson Area Career Center

\$3 per person

Register & pay by March 31st

At <https://yqcaprogram.org/>

Pizza dinner will be provided at 5:30pm

Or

Online

<https://yqcaprogram.org/>

LARGE ANIMAL EXPECTATIONS MEETING: DAIRY – BEEF – SWINE - SHEEP

Each large animal species superintendent will go through their expectations packets. Youth and families will learn what is expected to raise and show this specie and can ask questions!!



MICHIGAN STATE
UNIVERSITY

Extension

DATE & TIME:
February 21st, 2025
6:30pm SHARP

COST: \$10

LOCATION:
MSU Extension
Office
1715 Lansing Ave
Jackson, MI 49202



MSU is an affirmative-action, equal-opportunity employer, committed to achieving excellence through a diverse workforce and inclusive culture that encourages all people to reach their full potential. Michigan State University Extension programs and materials are open to all without regard to race, color, national origin, gender, gender identity, religion, age, height, weight, disability, political beliefs, sexual orientation, marital status, family status or veteran status. Issued in furtherance of MSU Extension work, acts of May 8 and June 30, 1914, in cooperation with the U.S. Department of Agriculture. Quentin Tyler, Director, MSU Extension, East Lansing, MI 48824. This information is for educational purposes only. Reference to commercial products or trade names does not imply endorsement by MSU Extension or bias against those not mentioned.



Jackson County 4-H members join us for an exciting workshop that celebrates chocolate, often referred to as "The Food of the Gods." Discover fascinating facts about chocolate, from its origins with the Mayans to the latest trends in this delightful treat. We will sample chocolates from around the world and create some delicious chocolate treats together.

HOW TO REGISTER:

Email waldro45@msu.edu or call (517) 788-4292

DEADLINE TO REGISTER: February 14th,



For any questions, please contact
Jessica Waldron at waldro45@msu.edu

JACKSON COUNTY 4-H CLOVERBUDS

JOIN THE FUN!!

- *JANUARY 7TH - DREAM CATCHER
- *FEBRUARY 4TH - CANVAS PAINTING
- *MARCH 4TH - CHEF CLOVERBUD
 - *APRIL 1ST- COUNCIL NIGHT
- *MAY 6TH - DAHLEM CENTER
- *JUNE 3RD- GARDENING

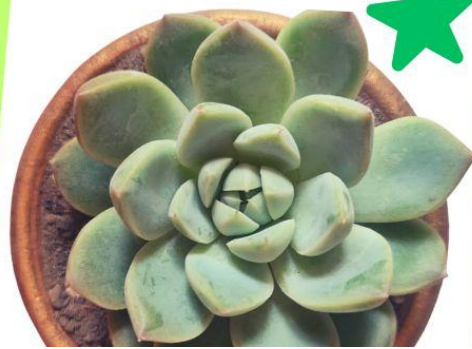
OPEN TO ALL JACKSON COUNTY 4-H MEMBERS 5-7 YRS OLD FOR MORE INFO PLEASE CONTACT JESSICA WALDRON AT 517-788-4292 OR WALDRO45@MSU.EDU

ALL ACTIVIES ARE FROM 6-7:30PM COST \$7 PER ACTIVITY MSU EXTENSION OFFICE 1715 LANSING AVE STE 257 JACKSON, MI 49202



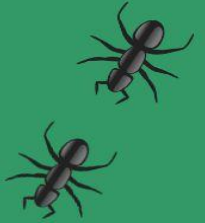
REGISTER AT:
WALDRO45@MSU.EDU
BY THE FRIDAY
BEFORE EACH CLASS

MSU is an affirmative-action, equal-opportunity employer, committed to achieving excellence through a diverse workforce and inclusive culture that encourages all people to reach their full potential. Michigan State University Extension programs and materials are open to all without regard to race, color, national origin, gender, gender identity, religion, age, height, weight, disability, political beliefs, sexual orientation, marital status, family status or veteran status. Issued in furtherance of MSU Extension work, acts of May 8 and June 30, 1914, in cooperation with the U.S. Department of Agriculture. Quentin Tyler, Director, MSU Extension, East Lansing, MI 48824. This information is for educational purposes only. Reference to commercial products or trade names does not imply endorsement by MSU Extension or bias against those not mentioned.

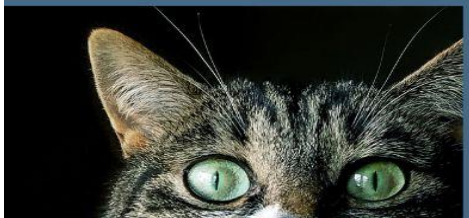




JACKSON COUNTY 4-H POCKET PETS & CATS

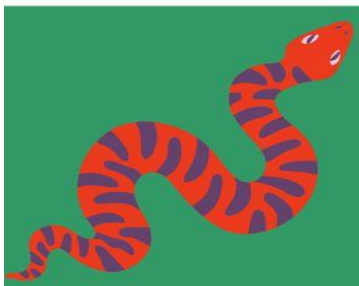


If you have a bird, a reptile, a cat, an ant farm, a gerbil or any other holdable pocket pet, then this is the club for you! Through hands on activities and special guest speakers you'll learn all about your pocket pet's needs, develop skills to keep them healthy, explore different careers in this field and you'll even get to show your pet at the Jackson Co. Fair.



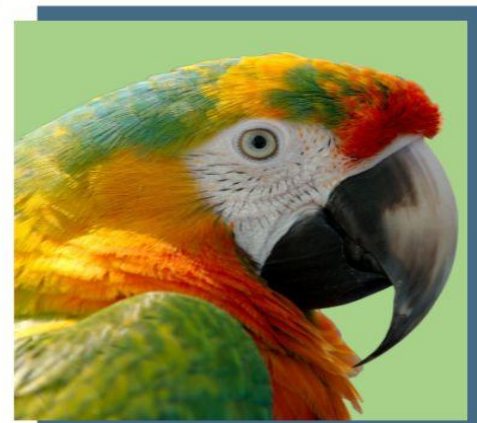
MEETING DATES:
*Jan 9th *Feb 13th
*Mar 13th *Apr 10th
*May 8th *June 12th
TIME:
6:00pm -7:30pm

MSU EXTENSION OFFICE
1715 LANSING AVE
STE 257
JACKSON, MI 49202



SIGN UP AT
WALDR045@MSU.EDU
FOR MORE INFORMATION CONTACT

Jessica Waldron
at 517-788-4292



MSU is an affirmative-action, equal-opportunity employer, committed to achieving excellence through a diverse workforce and inclusive culture that encourages all people to reach their full potential. Michigan State University Extension programs and materials are open to all without regard to race, color, national origin, gender, gender identity, religion, age, height, weight, disability, political beliefs, sexual orientation, marital status, family status or veteran status. Issued in furtherance of MSU Extension work, acts of May 8 and June 30, 1914, in cooperation with the U.S. Department of Agriculture. Quentin Tyler, Director, MSU Extension, East Lansing, MI 48824. This information is for educational purposes only. Reference to commercial products or trade names does not imply endorsement by MSU Extension or bias against those not mentioned.



STATEWIDE CALENDAR OF EVENTS

Get free tickets for Michigan 4-H Day at the Breslin!



Make plans for a fun day in East Lansing on March 1! Join with other members of the 4-H community for Michigan 4-H Day at the Breslin. This fun family event will be held at the Jack Breslin Student Events Center as the MSU Women's Basketball team takes on the Minnesota Golden Gophers.

In addition to the game, attendees will also enjoy 4-H activities around the concourse. Doors will open at 12:30 p.m., with tip-off scheduled for 2 p.m. Participants are encouraged to show their pride and wear green and white 4-H or MSU Extension apparel.

Tickets are free to 4-H youth and their families as well as 4-H volunteers and their families. For more information and to order tickets, visit www.canr.msu.edu/events/4-h-day-at-the-Breslin.

A member of the 4-H alumni community? Consider also stopping by the 4-H Alumni Tip-Off Reception on March 1! More information and registration at www.canr.msu.edu/events/4-h-alumni-tip-off-reception.

February 4: Crash Course: Credit Survival 101

Online

Youth learn the basics of credit: advantages and disadvantages, credit vs. debit, credit scores, interest, and tips to managing credit wisely.

www.canr.msu.edu/events/crashcreditcoursefeb-4

February 11: 4-H Wild Spartans – The Relationship Between Tribes and Fish

Online

Plunge into the world of Great Lakes fisheries and meet Jason Smith, Great Lakes fisheries assessment biologist for the Bay Mills Indian community. Learn about his work, and the education and career path he followed to get there. Ask questions to learn more through a live Q&A. Open to youth ages 12-19 years.

www.canr.msu.edu/events/wild-spartans-monthly-wildlife-fisheries-webinar-series-february-2024-2025

February 12: Online Parent Talk System Webinar Series

Online

A course for caregivers to improve communication and provide strategies for raising confident, caring, responsible children. This weekly series will be offered Wednesdays from Feb. 12 – Mar. 19 at no cost.

www.canr.msu.edu/events/the-parent-talk-system-series-february-march-25

February 13: Ace the Interview: Tips to Land Your Dream Job

Online

Through the partnership of Toyota and Michigan 4-H, youth will explore a variety of career paths in the automotive industry as well as build workforce readiness skills to take on their goals. This second offering in the five-part webinar series will focus on tips for a successful interview.

www.canr.msu.edu/events/ace-the-interview

February 15: 4-H Animal Science Career Quest 2025

Online

A career exploration program for youth ages 12-19 interested in pursuing a career in animal science. Learn about everything animal science has to offer and many career skill-building activities through hands-on sessions. Register by Feb. 3.

www.canr.msu.edu/events/4-h-animal-science-career-quest-2025

February 25: 4-H Volunteer Webinar Series; Facilitation Skills for 4-H Clubs

Online

Gain essential facilitation skills to engage every voice and increase efficiency in your 4-H club. This session offers tools to create inclusive, dynamic discussions, making sure all members feel heard while streamlining club activities. This webinar will be offered at two different times:

12 p.m. www.canr.msu.edu/events/michigan-4-h-volunteer-webinar-series-engaging-every-voice-facilitation-skills-for-dynamic-4-h-clubs-noon

7 p.m. www.canr.msu.edu/events/michigan-4-h-volunteer-webinar-series-engaging-every-voice-facilitation-skills-for-dynamic-4-h-clubs-7pm





STATEWIDE 4-H NEWS



Apply for the Michigan 4-H State Awards!

Michigan 4-H true leaders ages 11 and older have an opportunity to be recognized for the great work they do in 4-H and develop their career skills by completing a state award application. A Michigan 4-H State Award is the highest honor bestowed on a Michigan 4-H member and provides an opportunity to receive recognition for their engagement in rich learning experiences that result in outstanding knowledge and life-skill development.

State award applications are divided into four categories: Mark of Excellence contest (10-11 years), junior state award (12-15 years), senior state award (16-19 years) and group awards (13-19 years). Each application and selection process varies, dependent on the applicant's age.

More information about the Michigan 4-H State Award process and Mark of Excellence Contest can be found online at <http://bit.ly/stateaward>. Applications are due April 1. For more information, contact your 4-H program coordinator or email Betty Jo Krosnicki at nashbett@msu.edu or Janice Zerbe at rajzerj@msu.edu.

Participate in the World Food Prize Michigan Youth Institute

As millions across the globe deal with food insecurity, the World Food Prize Michigan Youth Institute (WFP MIYI) offers young people an opportunity to be part of the solution. Held May 8 in East Lansing, or by participating from anywhere else using Zoom video/web conference technology, the event seeks to inspire and prepare the next generation of global leaders to end world hunger.



To participate, youth should be in grades 7-12 and register by the March 15 deadline. As part of the registration process, youth are required to prepare a three- to five-page research paper about a developing country and one of 22 key factors that affect food security. At the event, youth present and discuss their papers with other attendees and research and industry experts.

The top performing students at the WFP MIYI will be selected to attend the World Food Prize Global Youth Institute in Des Moines, Iowa, in October. For more information, visit <https://www.canr.msu.edu/wfpmiyi/>. Registration opens Feb. 1 and closes Mar. 15.



Seeking outstanding agricultural 4-H volunteers

The Michigan 4-H Foundation is seeking nominations of remarkable agricultural 4-H volunteers for the Michigan Farm Bureau (MFB) 4-H Excellence in Agriculture Award. This award recognizes outstanding 4-H volunteers that have exhibited excellence in 4-H youth education and leadership development in the areas of 4-H beef cattle; dairy cattle; goats; horses; horticulture, crops and soils; poultry; rabbits; sheep; swine; and veterinary science.

Up to five MFB Excellence in Agriculture Award honorees are recognized each year. Selected recipients will be recognized by both Michigan 4-H and MFB. In addition, honorees receive a \$1,000 grant they designate to a 4-H agricultural program of their choice. The award is supported by an endowment with the Michigan 4-H Foundation that was established by MFB.

Nominations for the MFB Excellence in Agriculture Award should be submitted by March 15. To nominate a deserving individual or learn more about the 4-H Excellence in Agriculture Award, visit <https://mi4hfdtn.org/grants-scholarships/mfb-4-h-excellence-in-agriculture-award/>.



2024 - 2025 Pesticide Classes

2024-2025 Pesticide Training and RUP Testing Sites



MSU Extension, MDARD PPPMD, and MSU Pesticide Safety Education Program are offering in-person Core Manual review classes followed by Core pesticide applicator certification testing. Fumigation and Aerial Standard tests will also be available.

PRIVATE CORE, FUMIGATION STANDARD, AERIAL STANDARD AND COMMERCIAL CORE TESTS ONLY. NO COMMERCIAL CATEGORY TESTS.

ATTENDANCE FOR THE CORE REVIEW IS MANDATORY TO PARTICIPATE IN THE IN-PERSON TESTING. REFUNDS OR DEFERRING TO OTHER LOCATIONS ARE ALLOWED ONLY UNDER CERTAIN CONDITIONS.

The 4-hour review covers the chapters of the National Pesticide Applicators Certification Core Manual. The review is held in the morning and the MDARD exams are given that afternoon. We recommend participants read and study the Core Manual before attending the review. Copies may be ordered from: <https://npsecstore.com/pages/michigan>. County Extension offices may also have copies available. Please call ahead for availability.

TIME:

- 8 a.m. Check-in
- 8:30 a.m. to 12:30 Core review class
- 12:30 Lunch is provided
- 1:00 p.m. MDARD testing session

REVIEW CLASS COST: Fee for the Core review class is \$25.00. Payable to Michigan State University or MSU.

MDARD TESTING COST: Fee for applicator certification is paid to the STATE OF MICHIGAN. Commercial Applicator certification fee is \$75.00, Private Applicator fee is \$50.00 and Registered Applicator fee is \$45.00. Military Veterans Private applicator certification fees are waived if a copy of their DD214 is provided.

A check payable to "State of Michigan" is the only payment accepted for the applicator certification fee. **Cash or credit card payments are not accepted.** MDARD will provide a Postage paid envelopes to send certification payment. **MDARD will NOT accept payment the day of the session**

MSU is an affirmative-action, equal-opportunity employer, committed to achieving excellence through a diverse workforce and inclusive culture that encourages all people to reach their full potential. Michigan State University Extension programs and materials are open to all without regard to race, color, national origin, gender, gender identity, religion, age, height, weight, disability, political beliefs, sexual orientation, marital status, family status or veteran status. Persons with disabilities have the right to request and receive reasonable accommodations.



2025 Regional Crop and Pest Management Updates

Learn about the latest recommendations for managing weeds, diseases, insects and nematodes from MSU Extension educators and specialists.

Jan 10—Bad Axe, Franklin Inn
Contact Huron County MSU Extension Office at 989-269-9949

Jan 15—Ithaca, Gratiot Isabella RESD
Contact Isabella County Extension at 989-317-4079

Feb 5—Dowagiac, Dowagiac Conservation Club
Contact the St Joseph MSU Extension Office at 269-467-5511

Feb 7 - Frankenmuth, SVREC
Contact Saginaw County Extension Office at 989-907-6520

Feb 11—Alpena, Alpena Community College
Contact Isabella County Extension Office at 989-317-4079

Feb 20- Hillsdale, Hillsdale ISD
Contact Jackson County Extension Office at 517-788-4292

Thanks to the support from our partners



MSU is an affirmative-action, equal-opportunity employer, committed to achieving excellence through a diverse workforce and inclusive culture that encourages all people to reach their full potential. Michigan State University Extension programs and materials are open to all without regard to race, color, national origin, gender, gender identity, religion, age, height, weight, disability, political beliefs, sexual orientation, marital status, family status or veteran status.

For more information and to register visit <https://events.anr.msu.edu/2025CropPestUpdate/> or scan the QR code



Registration is \$40 and includes lunch and the 2025 Weed Control Guide for Field Crops

RUP and CCA credits will be available at each meeting.

